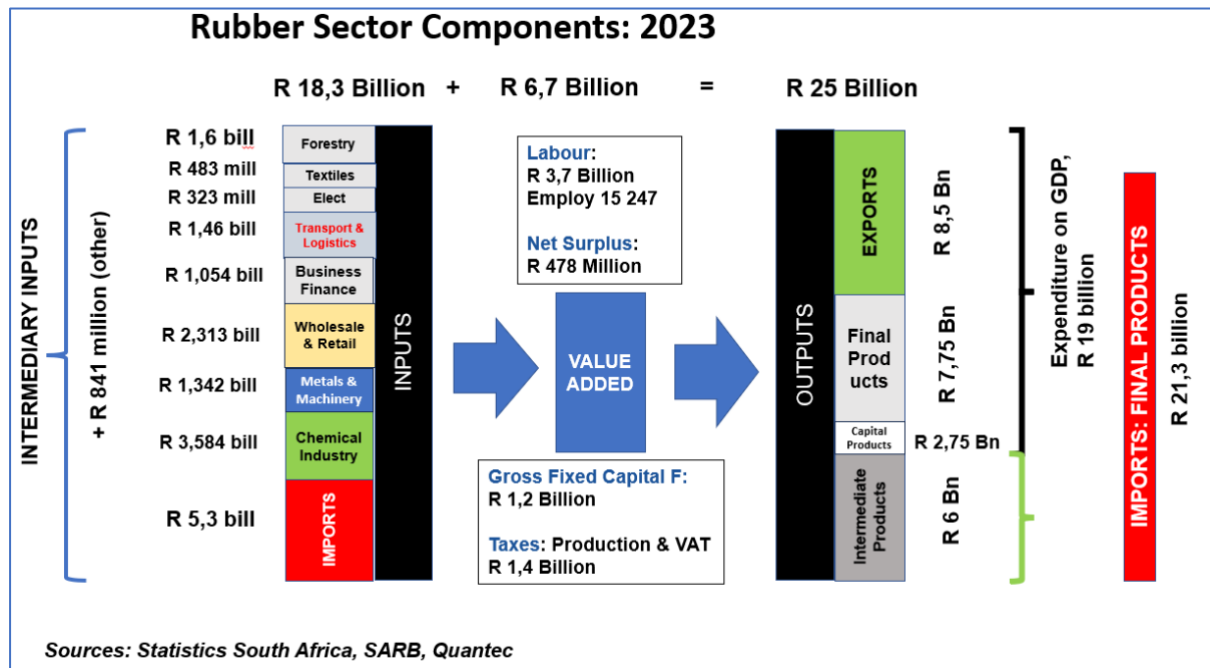


Special Focus on the Rubber Sector & Product trade

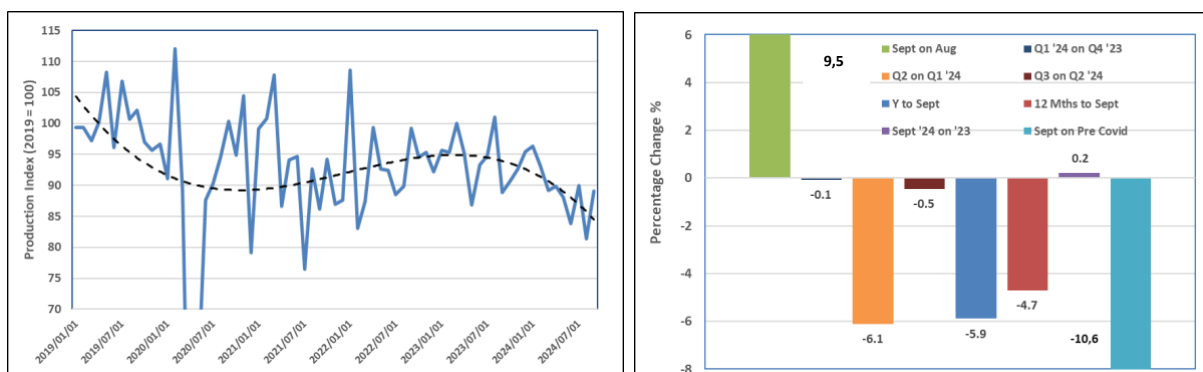
This section consists of an abbreviated summary of salient trends, relationships and ratios for the Rubber Sub-sector.

A further objective is to show some of the detail data available and potential for more disaggregated analysis. International trade data is classified according to the harmonised system (HS) of tariffs. To enabling linkages to domestic industrial data, the former/trade data is reclassified according to the standard industrial classification (SIC) for SA.)



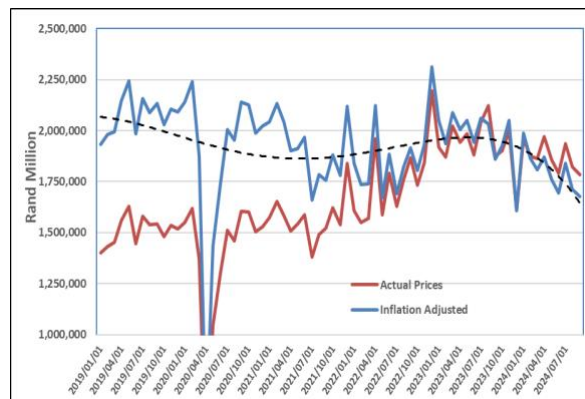
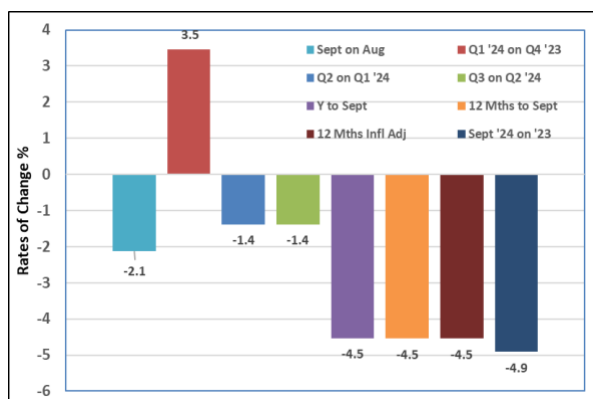
The schematic above shows the 2023 input, value added (sub sector gross domestic production) and output (sales) as well as international trade in intermediary and final products, for rubber, according to the SIC classification.

The **Rubber production** trendline shows a perturbing decline starting at the beginning of 2023 and lots of production instability, with average levels now about 15% below the pre Covid situation. September was a particularly good month, probably in anticipation of higher consumption expenditure (towards quarter 4) due to the 'two-pot' pension withdrawals and lower interest rates. The 12 month production data however, indicates that 2024 will probably be about 4% below 2023.



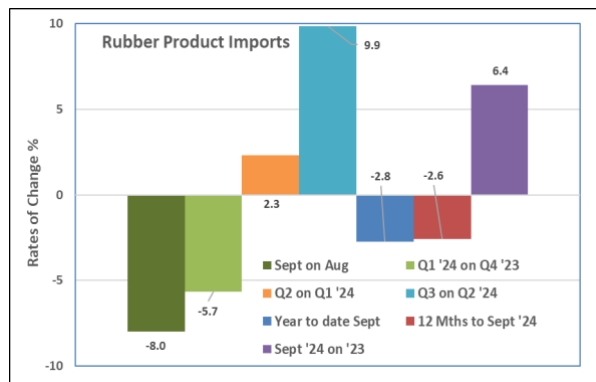
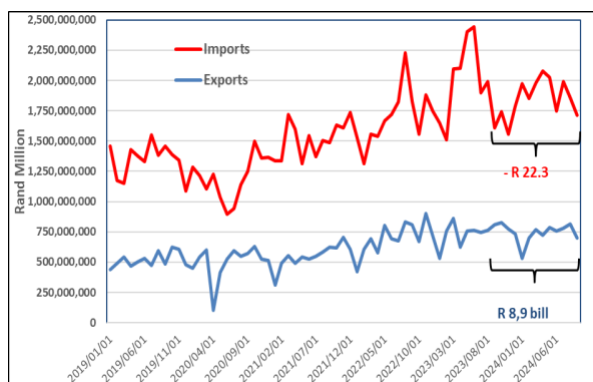
Source: Statistics SA, Manufacturing Production & Sales, p3041.2, Quantec

Rubber product sales were disappointing after a good start in quarter 1 of 2024. All indications are that 2024 will see a contraction of around 4% on 2023. Sales also began its decline in the beginning of 2023.



Source: Statistics SA, Manufacturing Production & Sales, p3041.2, Production Price Indices, P0142.1, Quantec

SARS's **international trade data** is shown below. The right hand graph only shows imports. Quarter 3 also saw a big jump in imports, probably on the same sentiment as with the production pattern. The import and export data (tables) below indicate that a large proportion of imports (= +/- 20%) were earmarked for re-exports to SADC areas north of SA.



Sources: SARS trade data & Quantec

The four tables below show the imports and exports of rubber products, as well as countries of origin and/or destination. for 2023.

Import of specific goods (Top 10 import goods)

Imports of specific product	HS Code	R million	%
New pneumatic tyres, of rubber [HST4011]	HST4011	13,588.11	63.73
Other articles of vulcanised r [HST4016]	HST4016	2,909.70	13.65
Tubes, pipes and hoses, of vul [HST4009]	HST4009	1,539.84	7.22
Conveyor or transmission belts [HST4010]	HST4010	1,396.65	6.55
Articles of apparel and clothi [HST4015]	HST4015	611.94	2.87
Hygienic or pharmaceutical art [HST4014]	HST4014	394.38	1.85
Plates, sheets, strip, rods an [HST4008]	HST4008	272.49	1.28
Retreaded or used pneumatic ty [HST4012]	HST4012	243.27	1.14
Compounded rubber, unvulcanise [HST4005]	HST4005	207.29	0.97
Rubberised textile fabrics, ot [HST5906]	HST5906	170.04	0.8

Origin of goods imports (Top 10 import regions)

Imports origin by region	R million	%
Eastern Asia	8,003.27	37.54
European Union	6,691.30	31.38
South Asia	4,159.35	19.51
NAFTA	2,748.16	12.89
Western Asia	470.09	2.2
Europe Rest	321.64	1.51
Americas Rest	267.49	1.25
Oceania including Australia and New Zealand	40.37	0.19
Northern Africa	38.99	0.18
Not allocated	37.16	0.17

Export of specific goods (Top 10 export goods)

Product	HS Code	R million	%
New pneumatic tyres, of rubber [HST4011]	HST4011	5,147.39	60.81
Conveyor or transmission belts [HST4010]	HST4010	1,092.18	12.9
Other articles of vulcanised r [HST4016]	HST4016	1,064.77	12.58
Tubes, pipes and hoses, of vul [HST4009]	HST4009	830.84	9.82
Retreaded or used pneumatic ty [HST4012]	HST4012	253.54	3
Compounded rubber, unvulcanise [HST4005]	HST4005	161.14	1.9
Plates, sheets, strip, rods an [HST4008]	HST4008	143.7	1.7
Articles of apparel and clothi [HST4015]	HST4015	110.61	1.31
Hygienic or pharmaceutical art [HST4014]	HST4014	42.02	0.5
Other forms (for example, rods [HST4006]	HST4006	39.62	0.47

Destination of goods exports (Top 10 export regions)

Export destination by region	R million	%
SADC	5,269.25	62.25
European Union	1,137.99	13.44
NAFTA	882.56	10.43
Northern Africa	332.07	3.92
Western Asia	301.64	3.56
Eastern Asia	272.29	3.22
Europe Rest	212.07	2.51
Sub-Saharan Africa excluding SADC	189.1	2.23
Oceania including Australia and New Zealand	138.52	1.64
South Asia	122.75	1.45