

# Process Safety Webinar Series - Part 3

15 April 2021

## Management of Change



Terrence Moothusamy

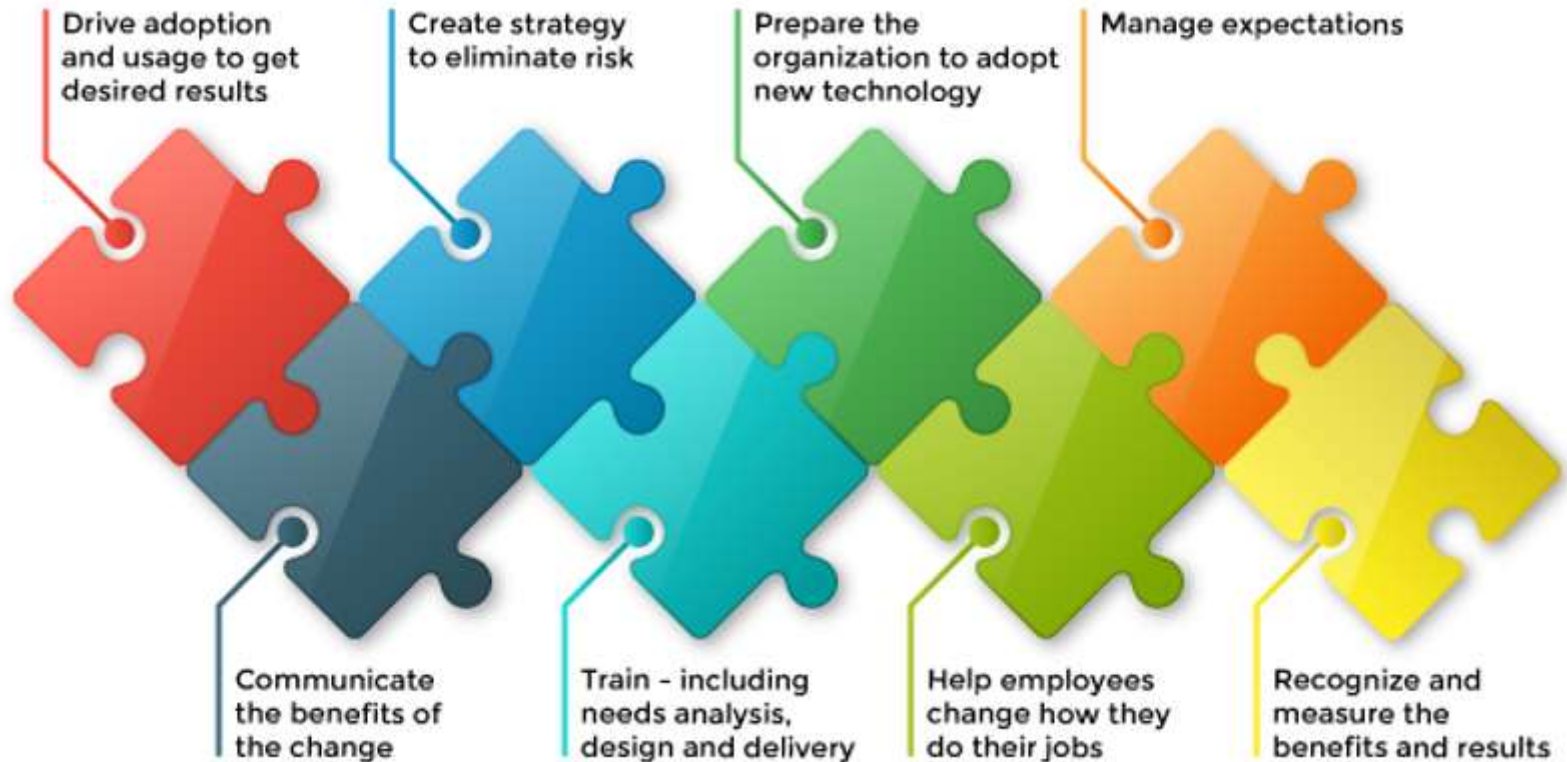
# Introduction

- ▶ BSc. Engineering (Chem), B.Tech Pulp and Paper, Project Management Diploma(USB), PDBA (Gibbs),SAMTRAC(NOSA)
- ▶ Approved Inspection Authority – Major Hazard Regulations
- ▶ ECSA, Pr Eng
- ▶ IChemE, AMIChemE
- ▶ 20 years experience in Major Hazard Facilities

# Process Safety – Operational Excellence



# Why Do I Need to Manage Change?



# Management of Change - Scenario

Purchasing found a cheaper supplier for a high hazard liquid raw material. It would be delivered to the site's dedicated delivery point in the same type of ISO tank with the same connections. The plant **was not** consulted, and Purchasing did not raise an MoC. The first delivery **demolished** the delivery gantry leading to a modest loss of material to the environment but a **significant loss of production**. The new supplier had a different haulier who used a higher trailer to carry the ISO tank.

# What Does A 'Good' MoC System Look Like?

## Scope and Coverage of MoC

- ▶ MOC should cover all changes no matter how small
- ▶ MOC should cover all types of changes – plant, process, personnel and control; systems
- ▶ MOC should cover all locations – lab, warehouse, utilities, quality, design, drawing offices etc.
- ▶ MOC should include temporary changes and “emergency” changes

# What Does A 'Good' MoC System Look Like?

## Assessment and Authorization

- ▶ MoC must be approved by people with the appropriate knowledge and experience
- ▶ MoC is peer reviewed by MoC meeting before authorization
- ▶ All MoC are approved by senior management before implementation

## Implementation

- ▶ How have staff been trained on the change – effectiveness of training
- ▶ How are the records of staff training kept

# What Does A 'Good' MoC System Look Like?

## Management review of the MoC system and its management

- ▶ The MoC system – periodic reviews
- ▶ Evaluate effectiveness



# Thank you

Any questions?

